

Admissions Policy

The Graduate School of Health Sciences' basic philosophy is to provide education in internationally excellent health care and health science in order to train personnel in the spirit of "sincerity, liberty, and cooperation" to possess high ethical and scientific perspectives and contribute to the health and well-being of humanity. Hence, we seek students meeting the following profile:

- Students with a clear sense of purpose and positive motivation for learning
- Students with the capacity for logical thought and objective judgment
- Students with an international perspective, who possess research and practical skills
- Students with a proud yet cooperative attitude towards their own specialization

Curriculum (education programs and conditions of completion, etc.)

The educational methods of the Graduate School are as stipulates in Article 11 of the Standards for the Establishment of Graduate Schools. "Education at Graduate Schools shall be conducted via taught subjects, classes and research supervision."

The completion conditions of the first semester (or second semester) programs of this Graduate School stipulate that the first semester

(or second semester) program must be studied for two years (or three years), that the specified credits must be acquired, and that after receiving the necessary research guidance, the master's (doctor's) dissertation must pass review, and the final examinations must be passed.

However, for both the first semester and second semester programs an interim presentation will be held to adequately ascertain the results of the research supervision and research progress, and to provide more effective research supervision thereafter.

As regards research supervision at this Graduate School, for each student enrolled, the topic of research supervision will be determined by the supervising member of staff and the student, and will be provide broadly and effectively by the supervising staff member, assistant supervising staff, and teaching staff from related fields. Our research supervision also gives consideration to improving research skills and mastering joint research methods through participation in general research projects.

■ Special Provision for educational methods based on Article 14 of the Standards for the Establishment of Graduate Schools

At this Graduate School we offer classes in the evening and on Saturdays to broaden the class options and facilitate the acquisition of credits. Acquisition of the specified credits is possible based entirely on subjects taught in the evening and on Saturdays.

■ The long-term studies system

At this Graduate School we have in place a system whereby students with particular circumstances, such as employment, can complete a systematically studied program within a number of years in addition to a fixed period exceeding the limit to the standard number of years of study (the limits are two years for the first semester program, and three years for the second semester program).

■ The teaching assistant (TA) system

To postgraduate students of high-caliber, we provide opportunities to engage in educational assistance work and provide detailed supervision in undergraduate education and for postgraduates to be trained as future teaching staff or researchers.

We compensate these opportunities to help improve the conditions of our postgraduates.

■ The research assistant (RA) system

For students with excellent skills enrolled on the second semester program who aspire to be future researchers, we aim to train research abilities through encouraging participation as research assistants in the research projects conducted by this department and effectively promoting research activities and working to assist research. We compensate these opportunities to help improve the conditions of our postgraduates.



Postgraduate degree dissertation presentation

■ Obtainable degrees

Students who satisfy the completion requirements of the first or second semester programs at this Graduate School detailed above will be awarded the degree of master's (Health Sciences) or doctor's (Health Sciences) respectively.

Pathways, scholarships, and access

Main pathways (for completion in academic years 2011 to 2015)

[Graduate School of Health Sciences Doctor's Program, First Semester Program]

- | | |
|--|--|
| • Kobe University | • Kobe University Hospital |
| • Kyoto University Hospital | • Osaka University Hospital |
| • Osaka City University Hospital | • Hyogo College of Medicine |
| • Nara Medical University | • Toranomon Hospital |
| • Kyoto First Red Cross Hospital | • National Center for Geriatrics and Gerontology |
| • National Hospital Organization Osaka National Hospital | • National Center for Child Health and Development |
| • Sysmex Corporation | • SHIONOGI & CO., LTD. |
| • Takeda Pharmaceutical | • Chugai Pharmaceutical |
| • Hyogo Prefectural Office | |

(26 students became academic staff at universities and technical schools)

[Graduate School of Health Sciences Doctor's Program, First Semester Program]

- | | |
|--|----------------------------|
| • Kobe University | • Kobe University Hospital |
| • Hokkaido University | • Kyoto University |
| • Mie University | • Nara Medical University |
| • Wakayama Medical University | • Gifu College of Nursing |
| • KAGAWA PREFECTURAL UNIVERSITY OF HEALTH SCIENCES | • Hyogo Cancer Center |
| • National Hospital Organization Kobe Medical Center | • Kofu Hospital |

(63 students became academic staff at universities and technical schools)

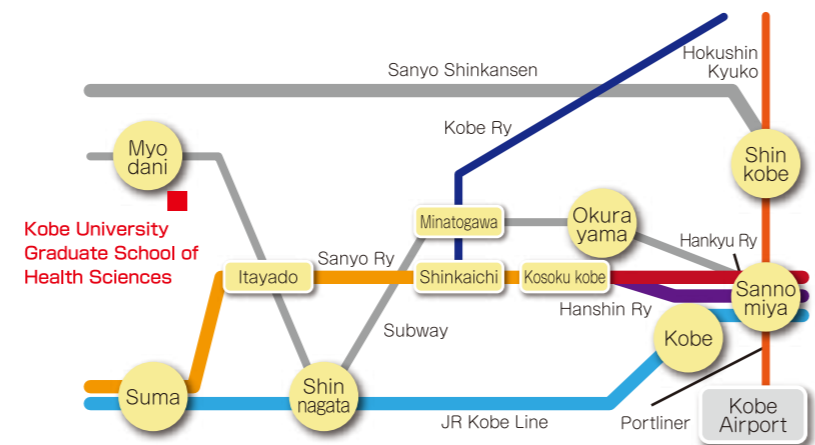
Scholarship system

The scholarships available at this school are as follows:

1. Japan Student Services Organization (JASSO) scholarships
2. The scholarship system for private scholarship associations and local public associations
3. The Kobe University Scholarship

Among the forms of scholarships available there are also "loans" that are either repayable or non-repayable after graduation (completion).

Access



[Access by public transport]

Take the Kobe Municipal Subway to Myodani St. and walk 15 mins. Southeast.
(Travel time from Sannomiya St. to Myodani St. on the Kobe Municipal subway is around 20 mins.)

Kobe University Graduate School of Health Sciences

7-10-2 Tomogaoka, Suma-ku, Kobe 654-0142
TEL: 078-796-4504 FAX: 078-796-4509
<http://www.ams.kobe-u.ac.jp/>



Message from the Dean of the Graduate School of Health Sciences

This year marks the 110th anniversary of Kobe University since it was established in 1902 (Meiji 35). Currently, the school is one of Japan's leading research and educational institutions with over 16,000 students in 11 undergraduate and 15 post-graduate programs, and is considered an institution of higher learning overflowing with initiative spirit and freedom based on the philosophy of "the harmonization of scientific principles and reality". At Kobe University, there is a fine balance between the study of arts and sciences, and we have achieved positive performances for both. Also, there is a hardly a wall that separates the studies between arts and sciences, and because of this, one of the university's characteristics is its potential capacity to create new academic disciplines due to the integrated research between arts and sciences that are constantly pursued.

The Graduate School of Health Sciences at the University of Kobe not only boasts a high number of Graduate School Master's program students (54 in each year) and Doctoral program students (25 in each year) even by Japan's standards but also takes pride in its high quality as a university that promotes research. In terms of its specialist disciplines, the Graduate School comprises the three main disciplines of Nursing, Rehabilitation Science, and Biophysics in addition to the two integrated disciplines of Community Healthy Science and International Health. All our disciplines endeavor to cultivate the qualities of researchers with rich specialist knowledge and abilities as well as creativity.

From academic year 2016, we will also offer a course in which midwifery and health nursing qualifications can be acquired at the Graduate School, and will train medical specialist able of playing active roles in high-risk pregnancy and childbirth care or in health administration and international health organizations.

In this manner, the Graduate School of Health promotes the cultivation of teaching staff in order to train highly specialized personnel and researchers.

Kobe University has established relationships with universities throughout the world. Within the Global Development Project adopted in 2012, through partnership with the top five universities in the ASEAN region, we exchange postgraduate students and researchers short and long-term, and strive to train global leaders for the next generation of health sciences in Asia. In both Japan and Asia, countermeasures against the declining birth rate and aging society is needed. Taking advantage of joint research networks constructed due to the partnerships with foreign universities, research institutions, and international institutions such as WHO, we are hoping to continue working on health and hygiene issues among Asian countries.

In addition, for our English education, we have installed master's courses that can be completed only in English from 2012, as we progress our support for globalization.

Within the medical field, we strongly aspire to develop technology to formulate healthcare systems using ICT and to evaluate brain function. Since academic year 2013, we have offered coordinated lectures and promoted joint research with the National Institute of Information and Communications Technology. In the future we aspire to continue to pioneer more interdisciplinary and novel fields of research integrating the humanities and sciences.

Philosophy and Aims

Basic Philosophy

Health Science is a practical academic field that contributes to improving the well-being of humankind and social welfare through education and research on physical and mental health, illness, and disability. It is necessary to perceive physical and mental health, illness, and disability by focusing on individuals and groups comprehensively in terms of the physical, mental, social, and ethical dimensions. This is the basic philosophy of the total health care promoted by the specialization in Health Sciences at the Graduate School of Health Sciences at Kobe University.

Aims

On the common foundation of a broad education, rich human qualities and ethical character, we aim to train, 1) researchers who have the originality and creativity necessary to establish total health care, 2) advanced medical specialists with rich clinical experience and research mind as well as leadership and management skills, 3) university teaching staff with clinical, research, and educational skills, and 4) advanced medical specialists with communication skills and multicultural understanding skills to promote international health care.

Attainment Objectives

In order to achieve the above philosophy and aims, we perceive the five-year doctor's program as a coherent whole, and have put in place the following attainment objectives within the doctor's first semester program and doctor's second semester program.

On the doctor's first semester program, we train skills in clinical practice, skills in the multidimensional analysis of problems faced, and research skills required to resolve problems, and we cultivate advanced medical specialists capable of playing an active role in team medicine, team care, total health care, and international health care. Within the program we offer family nursing and specialized nursing programs, and effectively deliver an education related to certification in specialist disciplines.

On the doctor's second semester program, we further develop the sophistication of analytical skills, problem-solving skills, and research skills acquired during the first semester program, and train educators and researchers rich in originality and creativity able to create, practice, and educate a new total health care through creative and developmental research.



Dean, Graduate School of Health Sciences

Yoshiaki KIDO

KOBE UNIVERSITY

Graduate School of Health Sciences 2016



About Graduate School of Health Sciences

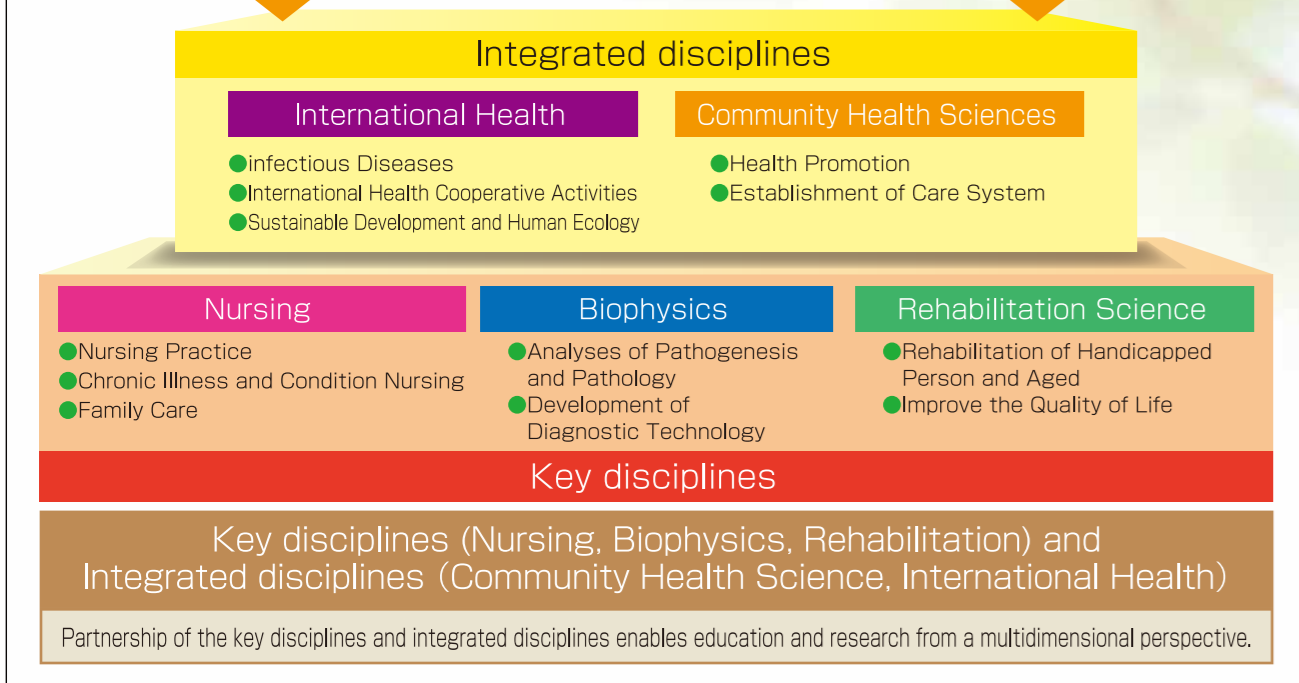
Faculty of Health Sciences

- Nursing
- Medical Technology
- Physical Therapy
- Occupational Therapy

The other Faculty

- Nutrition
- Education
- Agriculture
- Sport Sciences
- Social Welfare etc.

Graduate School of Health Sciences



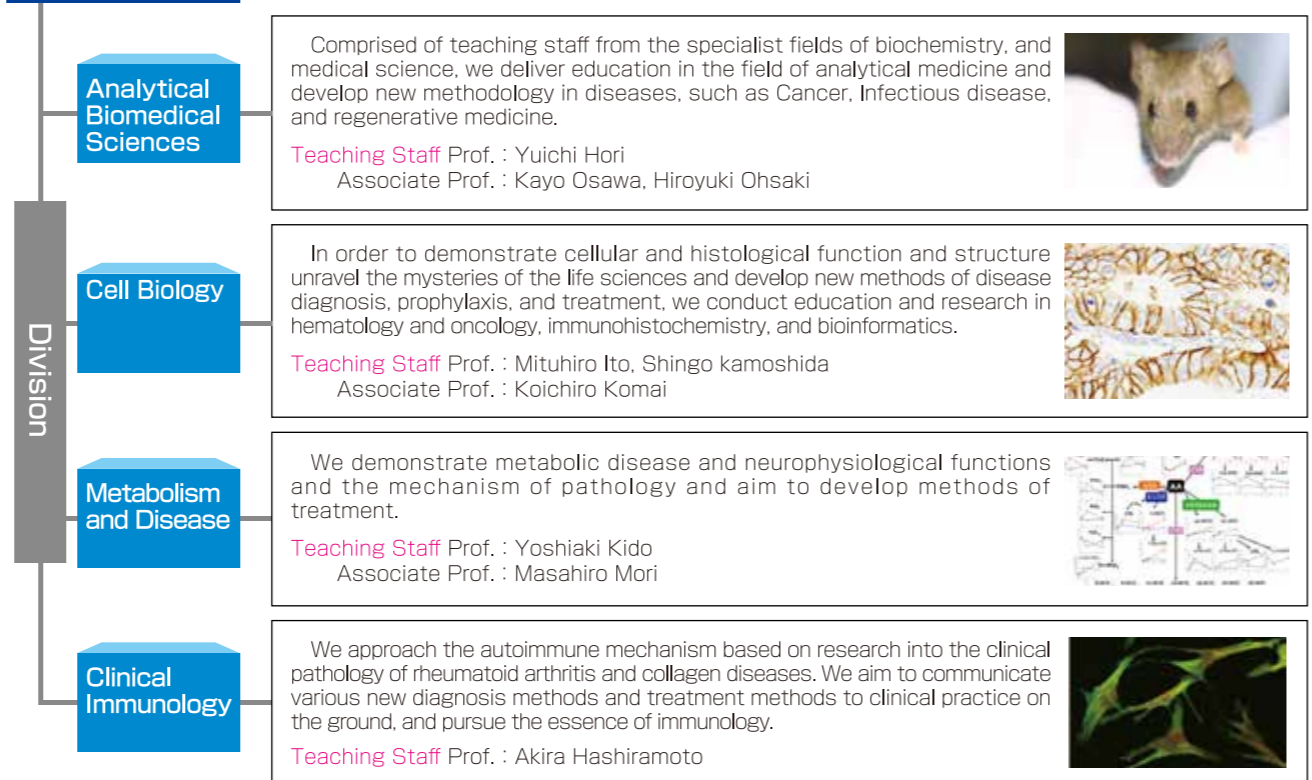
Department of Nursing

In the discipline of nursing, we train personnel in excellent specialized knowledge and practical skills, and our philosophy is to contribute to the development of Nursing through progressive research that approaches the advancement of medicine. In particular, in order to conduct transnational research linking the clinical domain and research as well as communicate nursing studies of a high evidence based level incorporating interdisciplinary and scientific perspectives, we offer the four following fields:



Department of Biophysics

In the discipline of Pathological Analysis we progress research related to health and disease from the perspectives of medicine and health science. We communicate our results worldwide and aim to contribute to new discoveries and advances in medicine, health science, and medical care. In order to train highly motivated medical specialists, researchers and educators with rich human qualities and creativity who are able to pioneer the medicine and health science of tomorrow, we offer the four following areas:



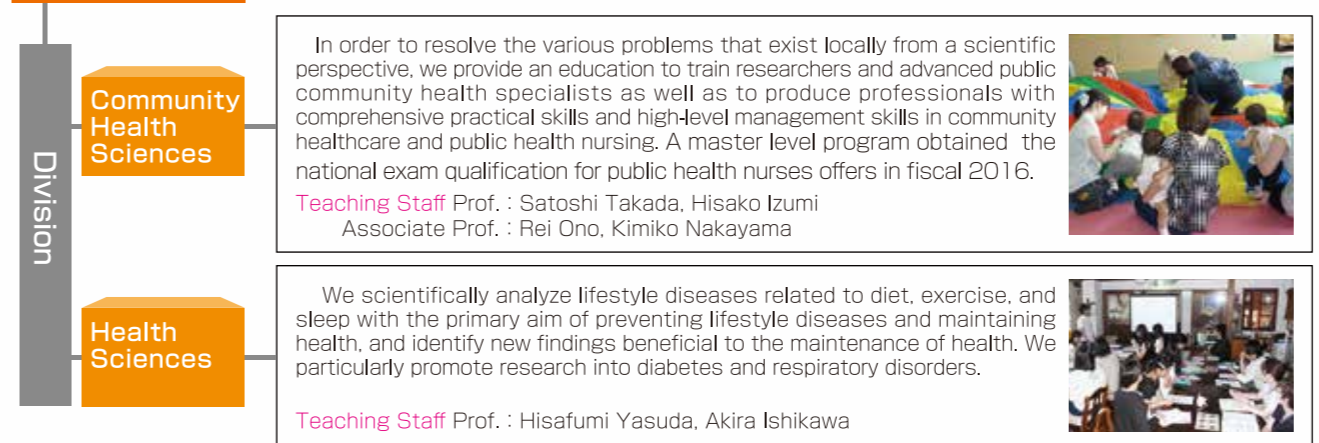
Department of Rehabilitation Science

The basic philosophy of rehabilitation is the, "recovery of the right to live as a whole person and as a human being with disabilities, or in other words 'human restoration' ". Rehabilitation Science is founded on this basic philosophy. We aim to train advanced specialists as educators, researchers, and leaders in clinical scenarios focused on the fields of physical therapy and occupational therapy.



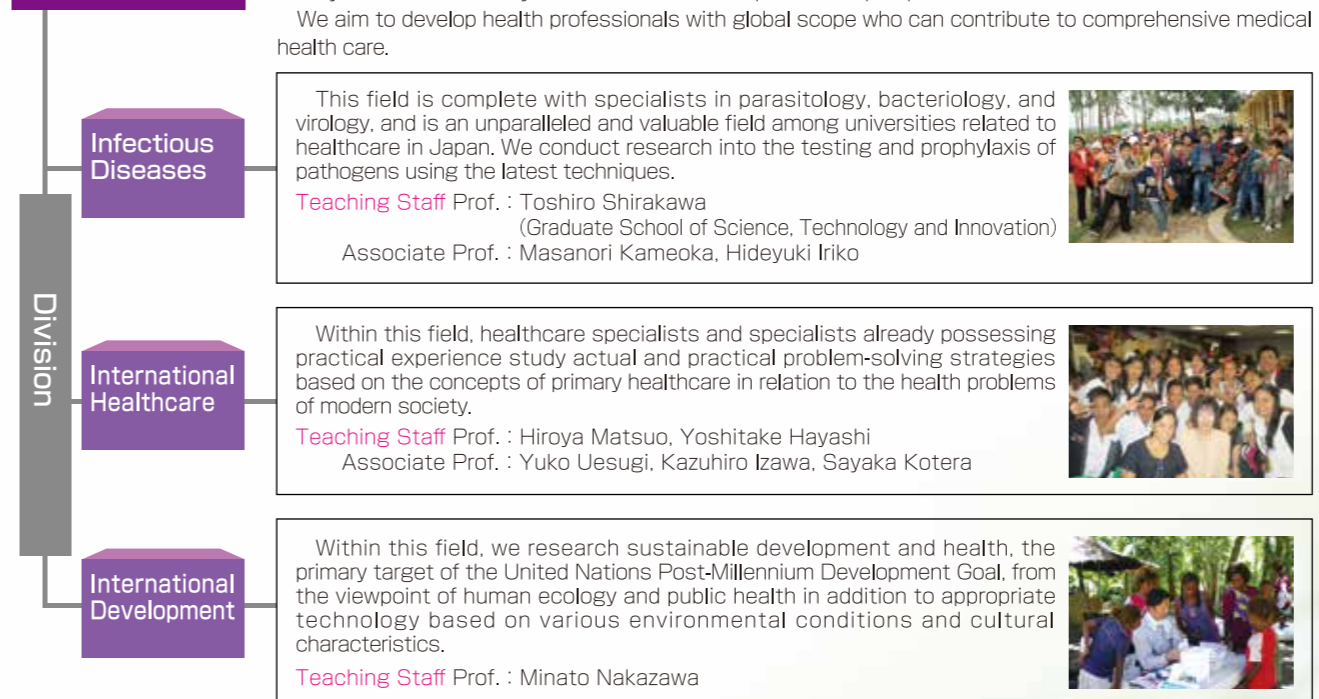
Department of Community Health Sciences

In the discipline of Community Health Sciences, the central challenge is the health of the overall community in which people live. Through the development of a medical and healthcare system as the foundation of community and research into the practice of that system, we aim to train personnel with a comprehensive and highly specialized knowledge who are capable of contributing to the development of new skills and systems as well as policy planning based on a global perspective.



Department of International Health

The department of international health has as its focus, grasping the current status of health gaps in various countries. We conduct various research such as clarifying the causes of such gaps, tackling infectious diseases in various situations worldwide and mitigating the unintended malicious effects of a developing and changing world. This approach would provide sustainable development based on field surveys and the laboratory research from the comprehensive perspective on health.



Topics & Characteristics

POINT 1 Advantages of Comprehensive University and Interdisciplinary Approach

Japan faces an aging society and declining birth rate, and medicine and healthcare issues are also shifting from hospitals to community, and from a "disease oriented". The issues of maintaining and promoting health, recovery from disability and enhancing the system of healthcare and medicine cannot be resolved by the Graduate School of Health Sciences alone. Kobe University is a comprehensive university that integrates the humanities and sciences, collaborates with other fields, and flexibly constructs a cross-cutting interdisciplinary education and research framework. Likewise, on campus we have a community partnership center and an international research and education center, and also develop joint research between the government, industry, and academia overseas and locally, and are also improving channels to pass-on the benefits to society.

POINT 2 Certified Nurse Specialist(CNS)in Family Health Nursing Program

This department is a frontrunner in the new field of "Family Nursing." On the Graduate School's first semester doctor's program, we are one of only six schools in Japan to offer Certified Nurse Specialist(CNS) in Family Health Nursing Program. The CNS is the highest professional nursing qualification, involves making diagnoses and providing treatment, and introduces an educational program capable of developing advanced nursing practice integrating both care and cure. This course aims to produce advanced specialist professionals capable of playing an active role internationally, who possess the competency to practice family support based on evidence acquired through research and theory.

POINT 3 ICHS

The Graduate School of Health Sciences started to offer classes on an English language course (International Course for Health Sciences: ICHS) for postgraduate students on the doctor's program from academic year 2012. On this course, postgraduates can acquire credits and complete their period of study entirely in English. Starting 2014, the ICHS is available to post-graduate students in the doctoral program. In addition to English language lectures delivered by full-time teaching staff, we offer lectures by native teaching staff throughout the year. We also hold the Summer Educational Program conducted by staff from various Asian countries, primarily from Southeast Asia. This course will enable students to acquire the communication skills and cross-cultural understanding required to develop health care activities. Through the creation and practice of comprehensive health sciences suited to overseas socio-economic situations and lifestyles, we aim to train advanced practical specialists in the health sciences capable of making contributions primarily at international institutions.

POINT 4 Overseas Training

As we as increasing the practicality of knowledge and skills acquired at university, in order to cultivate communication skills and a spirit that enjoys challenge, we collaborate with five universities in two Southeast Asian countries (Thailand and Indonesia), and mutually exchange postgraduate students. This program is named the "Education of global medical and health science leaders in the coming generation in cooperation and collaboration with ASEAN countries," and in addition to providing hands-on training through lectures and practice at affiliated hospitals and laboratories utilizing existing curricula at affiliated overseas schools, also recognizes their prescribed study credits.

POINT 5 A Master Level Program in Public Health Nursing and Midwifery will be offered in fiscal 2016

The Graduate School master's program will provide an opportunity for graduate students to acquire advanced practical skills in public health nursing. Students will develop research skills allowing them to implement evidence-based practices. This will enable students to resolve the complex and diverse public health problems of community from interdisciplinary and international perspectives. The midwife education equips midwives with midwifery diagnosis skills but also trains them in high-risk care, management skills, an international outlook. Students will develop research skills allowing them to implement evidence-based practice. This will enable students to possess an autonomous specialization as advanced professionals capable of making a broad social contribution.